


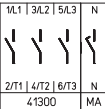


Main/Emergency-Off Switches

- Base mounting switches with snap-on mounting
- for DIN rail
- 3 up to 8 pole
- 20 A up to 125 A
- IP30



Switching programme	Rated data (IEC 60947)			Escutcheon dimension for 45 mm aperture in Panel/Distribution boards (H × W) (mm)	Padlockable handle V-handle yellow/red   IP30	Order code number
	Operat. current I _e (A)	Operational power (at 380–440 V) (kW)	AC-3 (kW)			
41300 – 3 pole – without auxiliary contacts 	20	5.5	3.7	45 × 48		H216-41300-026V4
	20	5.5	3.7	45 × 60		H216-41300-126V4
	25	7.5	5.5	45 × 48		H220-41300-026V4
	25	7.5	5.5	45 × 60		H220-41300-126V4
	32	11	7.5	45 × 48		H226-41300-026V4
	32	11	7.5	45 × 60		H226-41300-126V4
	40	15	11	45 × 48		H233-41300-026V4
	40	15	11	45 × 52.5		B240-41300-026V4*
	40	15	11	45 × 60		H233-41300-126V4
	50	18.5	15	45 × 52.5		B250-41300-026V4
	63	22	18.5	45 × 52.5		B263-41300-026V4
	63	22	18.5	45 × 72		H406-41300-126V4*
	80	30	22	45 × 72		H408-41300-126V4
	100	37	30	45 × 72		H410-41300-126V4
125	45	37	45 × 72		H412-41300-126V4	

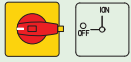
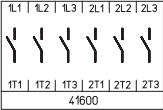
41400 – 4 pole – without auxiliary contacts – neutral contact early make/late break 	20	5.5	3.7	45 × 48		H216-41400-026V4
	20	5.5	3.7	45 × 60		H216-41400-126V4
	25	7.5	5.5	45 × 48		H220-41400-026V4
	25	7.5	5.5	45 × 60		H220-41400-126V4
	32	11	7.5	45 × 48		H226-41400-026V4
	32	11	7.5	45 × 60		H226-41400-126V4
	40	15	11	45 × 48		H233-41400-026V4
	40	15	11	45 × 52.5		B240-41400-026V4*
	40	15	11	45 × 60		H233-41400-126V4
	50	18.5	15	45 × 52.5		B250-41400-026V4
	63	22	18.5	45 × 52.5		B263-41400-026V4
	63	22	18.5	45 × 72		H406-41400-126V4*
	80	30	22	45 × 72		H408-41400-126V4
	100	37	30	45 × 72		H410-41400-126V4
125	45	37	45 × 72		H412-41400-126V4	

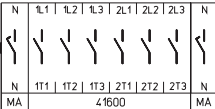
* larger terminal capacity, see page 154

Further switching programmes from page 132.

Disconnect Switches

Main/Emergency-Off Switches **Base mounting** Snap-on mounting for DIN rail

Switching programme	Rated data (IEC 60947)			Escutcheon dimension for 45 mm aperture in Panel/Distribution boards (H × W) (mm)	Padlockable handle V-handle yellow/red  IP30	Order code number
	Operat. current I _e	Operational power (at 380–440 V)				
	AC-21A (A)	AC-23A (kW)	AC-3 (kW)			
41600 – 6 pole – without auxiliary contacts 	20	5.5	3.7	45 × 76	H216-41600-026V4	
	25	7.5	5.5	45 × 76	H220-41600-026V4	
	32	11	7.5	45 × 76	H226-41600-026V4	
	40	15	11	45 × 76	H233-41600-026V4	
	40	15	11	45 × 105	B240-41600-026V4*	
	50	18.5	15	45 × 105	B250-41600-026V4	
	63	22	18.5	45 × 105	B263-41600-026V4	
	63	22	18.5	45 × 72	H406-41600-126V4*	
	80	30	22	45 × 72	H408-41600-126V4	
	100	37	30	45 × 72	H410-41600-126V4	
	125	45	37	45 × 72	H412-41600-126V4	

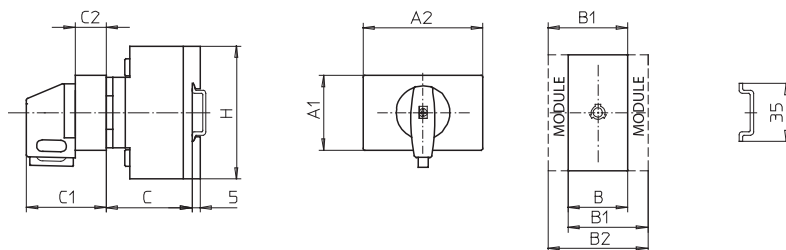
41800 – 8 pole – without auxiliary contacts – 2 neutral contacts early make/late break 	20	5.5	3.7	45 × 76	H216-41800-026V4	
	25	7.5	5.5	45 × 76	H220-41800-026V4	
	32	11	7.5	45 × 76	H226-41800-026V4	
	40	15	11	45 × 76	H233-41800-026V4	
	40	15	11	45 × 105	B240-41800-026V4*	
	50	18.5	15	45 × 105	B250-41800-026V4	
	63	22	18.5	45 × 105	B263-41800-026V4	
	63	22	18.5	45 × 72	H406-41800-126V4*	
	80	30	22	45 × 72	H408-41800-126V4	
	100	37	30	45 × 72	H410-41800-126V4	
	125	45	37	45 × 72	H412-41800-126V4	

* larger terminal capacity, see page 154
Further switching programmes from page 132.

Dimensions in mm:

Setup of order code number

Type	Switching progr.	Mtg. form
H216	41300	026V4
Order code no.	H216-41300-026V4	



Switching programmes 3 and 4 pole

Types H216 / H220 / H226 / H233:

Mtg. form	A1	A2	B	B1	B2	C	C1	C2	H
026V4	45	48	36	48	60	38	45	18.5	70
126V4	45	60	36	48	60	38	45	18.5	70

Types B240 / B250 / B263:

Mtg. form	A1	A2	B	B1	B2	C	C1	C2	H
026V4	45	52.5	50	69	88	38	45	18.5	72

Types H406 / H408 / H410 / H412:

Mtg. form	A1	A2	B	B1	B2	C	C1	C2	H
126V4	45	72	70	89	108	55	48	16	80

Switching programmes 6 and 8 pole

Types H216 / H220 / H226 / H233:

Mtg. form	A1	A2	B	B1	B2	C	C1	C2	H
026V4	45	76	72	84	96	40	51.5	25.5	70

Types B240 / B250 / B263:

Mtg. form	A1	A2	B	B1	B2	C	C1	C2	H
026V4	45	105	100	119	138	40	51.5	25.5	72

Types H406 / H408 / H410 / H412:

Mtg. form	A1	A2	B	B1	B2	C	C1	C2	H
126V4	45	72	140	159	178	67	48	16	80

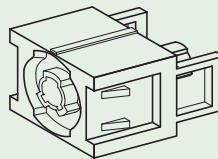
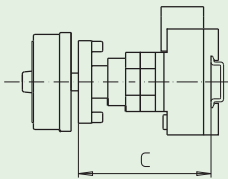
Main/Emergency-Off Switches

- Base mounting switches with snap-on mounting
- Door interlock
- 3 up to 8 pole
- 20 A up to 125 A
- **IP66**
- with modular or metal shaft extension
- single or four hole front mounting



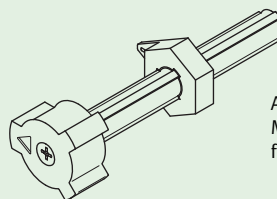
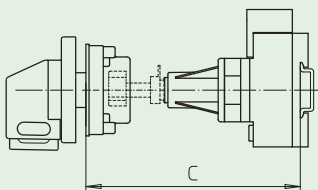
Base mounting switches with snap-on mounting and door interlock are offered with two different extensions:

1. Switches with **modular shaft extensions** can be extended with additional modules (modular shaft extensions see picture) which can be fixed to achieve different required mounting depths – dimension C. The modules are detailed on page 145.

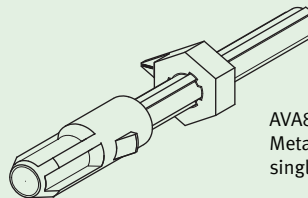
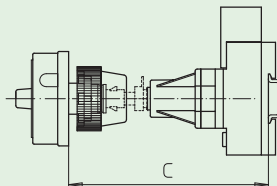


AVC2/AVC4
Modular shaft extension

2. For switches with **metal shaft extension** the metal shaft is not included in the scope of delivery and has to be ordered separately. Data for mounting dimension C and for the different types of metal shafts can be found on page 146.






AVB8
Metal shaft extension for
four hole front mounting



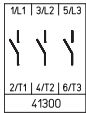
AVA8
Metal shaft extension for
single hole front mounting

Disconnect Switches

Main/Emergency-Off Switches **Base mounting** Snap-on mounting with door interlock

Switching programme	Rated data (IEC 60947)			Mounting dimension (front) (mm)	Padlock device N-handle yellow/red	Padlock device M-handle yellow/red	Padlockable handle V-handle yellow/red
	Operat. current I _e	Operational power (at 380–440 V)			 IP66	 IP66	 IP66
	AC-21A (A)	AC-23A (kW)	AC-3 (kW)		Order code number	Order code number	Order code number

41300
– 3 pole
– without auxiliary contacts



Modular shaft extension:

➔ Modular shaft extensions see page 145!

Length (mm)	Power (kW)	Current (A)	Mounting (mm)	Order code number	Order code number	Order code number
20	5.5	3.7	36 x 36	H216-41300-234N4	H216-41300-234M4	H216-41300-234V4
20	5.5	3.7	48 x 48	H216-41300-238N4	H216-41300-238M4	H216-41300-238V4
25	7.5	5.5	36 x 36	H220-41300-234N4	H220-41300-234M4	H220-41300-234V4
25	7.5	5.5	48 x 48	H220-41300-238N4	H220-41300-238M4	H220-41300-238V4
32	11	7.5	36 x 36	H226-41300-234N4	H226-41300-234M4	H226-41300-234V4
32	11	7.5	48 x 48	H226-41300-238N4	H226-41300-238M4	H226-41300-238V4
40	15	11	36 x 36	H233-41300-234N4	H233-41300-234M4	H233-41300-234V4
40	15	11	36 x 36	B240-41300-234N4*	B240-41300-234M4*	B240-41300-234V4*
40	15	11	48 x 48	H233-41300-238N4	H233-41300-238M4	H233-41300-238V4
40	15	11	48 x 48	B240-41300-238N4*	B240-41300-238M4*	B240-41300-238V4*
50	18.5	15	36 x 36	B250-41300-234N4	B250-41300-234M4	B250-41300-234V4
50	18.5	15	48 x 48	B250-41300-238N4	B250-41300-238M4	B250-41300-238V4
63	22	18.5	36 x 36	B263-41300-234N4	B263-41300-234M4	B263-41300-234V4
63	22	18.5	48 x 48	B263-41300-238N4	B263-41300-238M4	B263-41300-238V4
63	22	18.5	48 x 48	H406-41300-234N4*	H406-41300-234M4*	H406-41300-234V4*
80	30	22	48 x 48	H408-41300-234N4	H408-41300-234M4	H408-41300-234V4
100	37	30	48 x 48	H410-41300-234N4	H410-41300-234M4	H410-41300-234V4
125	45	37	48 x 48	H412-41300-234N4	H412-41300-234M4	H412-41300-234V4

Metal shaft extension:

➔ Metal shaft is not included. Please order separately, see page 146!

Length (mm)	Power (kW)	Current (A)	Mounting (mm)	Order code number	Order code number	Order code number
20	5.5	3.7	36 x 36	H216-41300-483N4	H216-41300-483M4	H216-41300-483V4
20	5.5	3.7	48 x 48	H216-41300-484N4	H216-41300-484M4	H216-41300-484V4
20	5.5	3.7	Ø 22.5	H216-41300-281N4	H216-41300-281M4	H216-41300-281V4
25	7.5	5.5	36 x 36	H220-41300-483N4	H220-41300-483M4	H220-41300-483V4
25	7.5	5.5	48 x 48	H220-41300-484N4	H220-41300-484M4	H220-41300-484V4
25	7.5	5.5	Ø 22.5	H220-41300-281N4	H220-41300-281M4	H220-41300-281V4
32	11	7.5	36 x 36	H226-41300-483N4	H226-41300-483M4	H226-41300-483V4
32	11	7.5	48 x 48	H226-41300-484N4	H226-41300-484M4	H226-41300-484V4
32	11	7.5	Ø 22.5	H226-41300-281N4	H226-41300-281M4	H226-41300-281V4
40	15	11	36 x 36	H233-41300-483N4	H233-41300-483M4	H233-41300-483V4
40	15	11	36 x 36	B240-41300-483N4*	B240-41300-483M4*	B240-41300-483V4*
40	15	11	48 x 48	H233-41300-484N4	H233-41300-484M4	H233-41300-484V4
40	15	11	48 x 48	B240-41300-484N4*	B240-41300-484M4*	B240-41300-484V4*
40	15	11	Ø 22.5	H233-41300-281N4	H233-41300-281M4	H233-41300-281V4
40	15	11	Ø 22.5	B240-41300-281N4*	B240-41300-281M4*	B240-41300-281V4*
50	18.5	15	36 x 36	B250-41300-483N4	B250-41300-483M4	B250-41300-483V4
50	18.5	15	48 x 48	B250-41300-484N4	B250-41300-484M4	B250-41300-484V4
50	18.5	15	Ø 22.5	B250-41300-281N4	B250-41300-281M4	B250-41300-281V4
63	22	18.5	36 x 36	B263-41300-483N4	B263-41300-483M4	B263-41300-483V4
63	22	18.5	48 x 48	B263-41300-484N4	B263-41300-484M4	B263-41300-484V4
63	22	18.5	48 x 48	H406-41300-483N4*	H406-41300-483M4*	H406-41300-483V4*
63	22	18.5	Ø 22.5	B263-41300-281N4	B263-41300-281M4	B263-41300-281V4
63	22	18.5	Ø 22.5	H406-41300-281N4*	H406-41300-281M4*	H406-41300-281V4*
80	30	22	48 x 48	H408-41300-483N4	H408-41300-483M4	H408-41300-483V4
80	30	22	Ø 22.5	H408-41300-281N4	H408-41300-281M4	H408-41300-281V4
100	37	30	48 x 48	H410-41300-483N4	H410-41300-483M4	H410-41300-483V4
100	37	30	Ø 22.5	H410-41300-281N4	H410-41300-281M4	H410-41300-281V4
125	45	37	48 x 48	H412-41300-483N4	H412-41300-483M4	H412-41300-483V4
125	45	37	Ø 22.5	H412-41300-281N4	H412-41300-281M4	H412-41300-281V4




* larger terminal capacity, see page 154

Further switching programmes from page 132.

Disconnect Switches

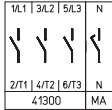


Main/Emergency-Off Switches **Base mounting** Snap-on mounting with door interlock

Switching programme	Rated data (IEC 60947)			Mounting dimension (front) (mm)	Padlock device N-handle yellow/red	Padlock device M-handle yellow/red	Padlockable handle V-handle yellow/red
	Operat. current I_e	Operational power (at 380–440 V)					
	AC-21A (A)	AC-23A (kW)	AC-3 (kW)		IP66	IP66	IP66
					Order code number	Order code number	Order code number

41400

- 4 pole
- without auxiliary contacts
- neutral contact
- early make/late break



Modular shaft extension:

➔ Modular shaft extensions see page 145!

20	25	32	40	50	63	80	100	125
5.5	7.5	11	15	18.5	22	30	37	45
3.7	5.5	7.5	11	15	18.5	22	30	37
36 x 36	36 x 36	36 x 36	36 x 36	36 x 36	36 x 36	48 x 48	48 x 48	48 x 48
H216-41400-234N4	H220-41400-234N4	H226-41400-234N4	H233-41400-234N4	B250-41400-234N4	B263-41400-234N4	H406-41400-234N4*	H410-41400-234N4	H412-41400-234N4
H216-41400-234M4	H220-41400-234M4	H226-41400-234M4	H233-41400-234M4	B250-41400-238M4	B263-41400-238M4	H406-41400-234M4*	H410-41400-234M4	H412-41400-234M4
H216-41400-234V4	H220-41400-234V4	H226-41400-234V4	H233-41400-234V4	B250-41400-238V4	B263-41400-238V4	H406-41400-234V4*	H410-41400-234V4	H412-41400-234V4
H216-41400-238N4	H220-41400-238N4	H226-41400-238N4	H233-41400-238N4	B250-41400-238N4	B263-41400-238N4	H406-41400-238N4*	H410-41400-238N4	H412-41400-238N4
H216-41400-238M4	H220-41400-238M4	H226-41400-238M4	H233-41400-238M4	B250-41400-238M4	B263-41400-238M4	H406-41400-238M4*	H410-41400-238M4	H412-41400-238M4
H216-41400-238V4	H220-41400-238V4	H226-41400-238V4	H233-41400-238V4	B250-41400-238V4	B263-41400-238V4	H406-41400-238V4*	H410-41400-238V4	H412-41400-238V4
H216-41400-234N4*	H220-41400-234N4*	H226-41400-234N4*	H233-41400-234N4*	B250-41400-234N4*	B263-41400-234N4*	H406-41400-234N4*	H410-41400-234N4*	H412-41400-234N4*
H216-41400-238N4*	H220-41400-238N4*	H226-41400-238N4*	H233-41400-238N4*	B250-41400-238N4*	B263-41400-238N4*	H406-41400-238N4*	H410-41400-238N4*	H412-41400-238N4*

Metal shaft extension:

➔ Metal shaft is not included. Please order separately, see page 146!




20	25	32	40	50	63	80	100	125
5.5	7.5	11	15	18.5	22	30	37	45
3.7	5.5	7.5	11	15	18.5	22	30	37
36 x 36	36 x 36	36 x 36	36 x 36	36 x 36	36 x 36	48 x 48	48 x 48	48 x 48
H216-41400-483N4	H220-41400-483N4	H226-41400-483N4	H233-41400-483N4	B250-41400-483N4	B263-41400-483N4	H406-41400-483N4*	H410-41400-483N4	H412-41400-483N4
H216-41400-483M4	H220-41400-483M4	H226-41400-483M4	H233-41400-483M4	B250-41400-483M4	B263-41400-483M4	H406-41400-483M4*	H410-41400-483M4	H412-41400-483M4
H216-41400-483V4	H220-41400-483V4	H226-41400-483V4	H233-41400-483V4	B250-41400-483V4	B263-41400-483V4	H406-41400-483V4*	H410-41400-483V4	H412-41400-483V4
H216-41400-484N4	H220-41400-484N4	H226-41400-484N4	H233-41400-484N4	B250-41400-484N4	B263-41400-484N4	H406-41400-484N4*	H410-41400-484N4	H412-41400-484N4
H216-41400-281N4	H220-41400-281N4	H226-41400-281N4	H233-41400-281N4	B250-41400-281N4	B263-41400-281N4	H406-41400-281N4*	H410-41400-281N4	H412-41400-281N4
H216-41400-484M4	H220-41400-484M4	H226-41400-484M4	H233-41400-484M4	B250-41400-484M4	B263-41400-484M4	H406-41400-484M4*	H410-41400-484M4	H412-41400-484M4
H216-41400-484V4	H220-41400-484V4	H226-41400-484V4	H233-41400-484V4	B250-41400-484V4	B263-41400-484V4	H406-41400-484V4*	H410-41400-484V4	H412-41400-484V4
H216-41400-281M4	H220-41400-281M4	H226-41400-281M4	H233-41400-281M4	B250-41400-281M4	B263-41400-281M4	H406-41400-281M4*	H410-41400-281M4	H412-41400-281M4
H216-41400-281V4	H220-41400-281V4	H226-41400-281V4	H233-41400-281V4	B250-41400-281V4	B263-41400-281V4	H406-41400-281V4*	H410-41400-281V4	H412-41400-281V4
H216-41400-483N4*	H220-41400-483N4*	H226-41400-483N4*	H233-41400-483N4*	B250-41400-483N4*	B263-41400-483N4*	H406-41400-483N4*	H410-41400-483N4*	H412-41400-483N4*
H216-41400-484N4*	H220-41400-484N4*	H226-41400-484N4*	H233-41400-484N4*	B250-41400-484N4*	B263-41400-484N4*	H406-41400-484N4*	H410-41400-484N4*	H412-41400-484N4*
H216-41400-281M4*	H220-41400-281M4*	H226-41400-281M4*	H233-41400-281M4*	B250-41400-281M4*	B263-41400-281M4*	H406-41400-281M4*	H410-41400-281M4*	H412-41400-281M4*
H216-41400-281V4*	H220-41400-281V4*	H226-41400-281V4*	H233-41400-281V4*	B250-41400-281V4*	B263-41400-281V4*	H406-41400-281V4*	H410-41400-281V4*	H412-41400-281V4*

* larger terminal capacity, see page 154

Further switching programmes from page 132.

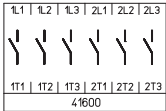
Disconnect Switches

Main/Emergency-Off Switches **Base mounting** Snap-on mounting with door interlock

Switching programme	Rated data (IEC 60947)			Mounting dimension (front) (mm)	Padlock device N-handle yellow/red	Padlock device M-handle yellow/red	Padlockable handle V-handle yellow/red
	Operat. current I_e	Operational power (at 380–440 V)			 IP66	 IP66	 IP66
	AC-21A (A)	AC-23A (kW)	AC-3 (kW)		Order code number	Order code number	Order code number

41600

- 6 pole
- without auxiliary contacts



Modular shaft extension:

➔ Modular shaft extensions see page 145!

Length (mm)	Power (kW)	Current (A)	Mounting (mm)	Order code N-handle	Order code M-handle	Order code V-handle
20	5.5	3.7	36 x 36	H216-41600-234N4	H216-41600-234M4	–
20	5.5	3.7	48 x 48	H216-41600-238N4	H216-41600-238M4	H216-41600-238V4
25	7.5	5.5	36 x 36	H220-41600-234N4	H220-41600-234M4	–
25	7.5	5.5	48 x 48	H220-41600-238N4	H220-41600-238M4	H220-41600-238V4
32	11	7.5	36 x 36	H226-41600-234N4	H226-41600-234M4	–
32	11	7.5	48 x 48	H226-41600-238N4	H226-41600-238M4	H226-41600-238V4
40	15	11	36 x 36	H233-41600-234N4	H233-41600-234M4	–
40	15	11	36 x 36	B240-41600-234N4*	B240-41600-234M4*	–
40	15	11	48 x 48	H233-41600-238N4	H233-41600-238M4	H233-41600-238V4
40	15	11	48 x 48	B240-41600-238N4*	B240-41600-238M4*	B240-41600-238V4*
50	18.5	15	36 x 36	B250-41600-234N4	B250-41600-234M4	–
50	18.5	15	48 x 48	B250-41600-238N4	B250-41600-238M4	B250-41600-238V4
63	22	18.5	36 x 36	B263-41600-234N4	B263-41600-234M4	–
63	22	18.5	48 x 48	B263-41600-238N4	B263-41600-238M4	B263-41600-238V4
63	22	18.5	48 x 48	H406-41600-234N4*	H406-41600-234M4*	H406-41600-234V4*
80	30	22	48 x 48	H408-41600-234N4	H408-41600-234M4	H408-41600-234V4
100	37	30	48 x 48	H410-41600-234N4	H410-41600-234M4	H410-41600-234V4
125	45	37	48 x 48	H412-41600-234N4	H412-41600-234M4	H412-41600-234V4

Metal shaft extension:

➔ Metal shaft is not included. Please order separately, see page 146!

Length (mm)	Power (kW)	Current (A)	Mounting (mm)	Order code N-handle	Order code M-handle	Order code V-handle
20	5.5	3.7	36 x 36	H216-41600-483N4	H216-41600-483M4	–
20	5.5	3.7	48 x 48	H216-41600-484N4	H216-41600-484M4	H216-41600-484V4
20	5.5	3.7	∅ 22.5	H216-41600-281N4	H216-41600-281M4	–
25	7.5	5.5	36 x 36	H220-41600-483N4	H220-41600-483M4	–
25	7.5	5.5	48 x 48	H220-41600-484N4	H220-41600-484M4	H220-41600-484V4
25	7.5	5.5	∅ 22.5	H220-41600-281N4	H220-41600-281M4	–
32	11	7.5	36 x 36	H226-41600-483N4	H226-41600-483M4	–
32	11	7.5	48 x 48	H226-41600-484N4	H226-41600-484M4	H226-41600-484V4
32	11	7.5	∅ 22.5	H226-41600-281N4	H226-41600-281M4	–
40	15	11	36 x 36	H233-41600-483N4	H233-41600-483M4	–
40	15	11	36 x 36	B240-41600-483N4*	B240-41600-483M4*	–
40	15	11	48 x 48	H233-41600-484N4	H233-41600-484M4	H233-41600-484V4
40	15	11	48 x 48	B240-41600-484N4*	B240-41600-484M4*	B240-41600-484V4*
40	15	11	∅ 22.5	H233-41600-281N4	H233-41600-281M4	–
40	15	11	∅ 22.5	B240-41600-281N4*	B240-41600-281M4*	–
50	18.5	15	36 x 36	B250-41600-483N4	B250-41600-483M4	–
50	18.5	15	48 x 48	B250-41600-484N4	B250-41600-484M4	B250-41600-484V4
50	18.5	15	∅ 22.5	B250-41600-281N4	B250-41600-281M4	–
63	22	18.5	36 x 36	B263-41600-483N4	B263-41600-483M4	–
63	22	18.5	48 x 48	B263-41600-484N4	B263-41600-484M4	B263-41600-484V4
63	22	18.5	48 x 48	H406-41600-483N4*	H406-41600-483M4*	H406-41600-483V4*
63	22	18.5	∅ 22.5	B263-41600-281N4	B263-41600-281M4	–
63	22	18.5	∅ 22.5	H406-41600-281N4*	H406-41600-281M4*	H406-41600-281V4
80	30	22	48 x 48	H408-41600-483N4	H408-41600-483M4	H408-41600-483V4
80	30	22	∅ 22.5	H408-41600-281N4	H408-41600-281M4	H408-41600-281V4
100	37	30	48 x 48	H410-41600-483N4	H410-41600-483M4	H410-41600-483V4
100	37	30	∅ 22.5	H410-41600-281N4	H410-41600-281M4	H410-41600-281V4
125	45	37	48 x 48	H412-41600-483N4	H412-41600-483M4	H412-41600-483V4
125	45	37	∅ 22.5	H412-41600-281N4	H412-41600-281M4	H412-41600-281V4

* larger terminal capacity, see page 154

Further switching programmes from page 132.

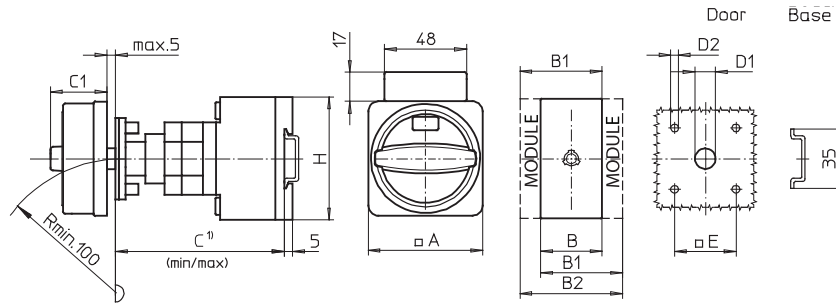
Disconnect Switches

Main/Emergency-Off Switches **Base mounting** Snap-on mounting with door interlock

Dimensions in mm:

Door interlock with **modular shaft extension**: Four hole front mounting

Setup of order code number		
Type	Switching progr.	Mtg. form
H233	41400	234N4
Order code no. H233-41400-234N4		



¹⁾ Internal depth: inside of door to top of DIN rail, dimensions with shaft extension see page 145.

Switching programmes 3 and 4 pole

Types H216 / H220 / H226 / H233:

Mtg. form	A	B	B1	B2	C _{min}	C _{max}	C1	D1	D2	E	H
234M4	67	36	48	60	92	107	38	15	4.5	36	70
234N4	67	36	48	60	92	107	33	15	4.5	36	70
234V4	48	36	48	60	92	107	32	12	4.5	36	70
238M4	67	36	48	60	92	107	38	15	5	48	70
238N4	67	36	48	60	92	107	33	15	5	48	70
238V4	64	36	48	60	92	107	39	15	5	48	70

Switching programmes 6 and 8 pole

Types H216 / H220 / H226 / H233:

Mtg. form	A	B	B1	B2	C _{min}	C _{max}	C1	D1	D2	E	H
234M4	67	72	84	96	100	115	38	15	4.5	36	70
234N4	67	72	84	96	100	115	33	15	4.5	36	70
238M4	67	72	84	96	100	115	38	15	5	48	70
238N4	67	72	84	96	100	115	33	15	5	48	70
238V4	64	72	84	96	100	115	39	15	5	48	70

Types B240 / B250 / B263:

Mtg. form	A	B	B1	B2	C _{min}	C _{max}	C1	D1	D2	E	H
234M4	67	50	69	88	92	107	38	15	4.5	36	72
234N4	67	50	69	88	92	107	33	15	4.5	36	72
234V4	48	50	69	88	92	107	32	12	4.5	36	72
238M4	67	50	69	88	92	107	38	15	5	48	72
238N4	67	50	69	88	92	107	33	15	5	48	72
238V4	64	50	69	88	92	107	39	15	5	48	72

Types B240 / B250 / B263:

Mtg. form	A	B	B1	B2	C _{min}	C _{max}	C1	D1	D2	E	H
234M4	67	100	119	138	104	119	38	15	4.5	36	72
234N4	67	100	119	138	104	119	33	15	4.5	36	72
238M4	67	100	119	138	104	119	38	15	5	48	72
238N4	67	100	119	138	104	119	33	15	5	48	72
238V4	64	100	119	138	104	119	39	15	5	48	72

Types H406 / H408 / H410 / H412:

Mtg. form	A	B	B1	B2	C _{min}	C _{max}	C1	D1	D2	E	H
234M4	88	70	89	108	102	117	50	15	5	48	80
234N4	88	70	89	108	102	117	45	15	5	48	80
234V4	64	70	89	108	102	117	40	15	5	48	80

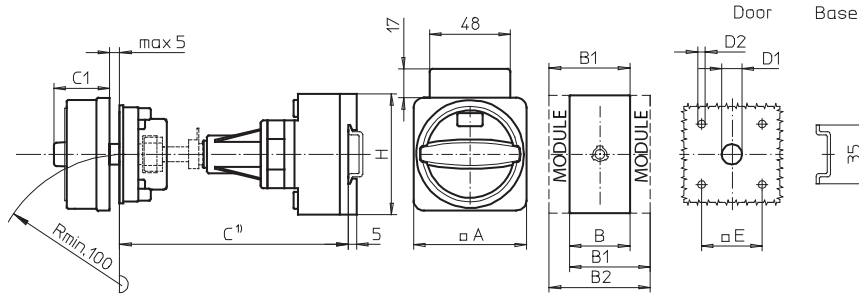
Types H406 / H408 / H410 / H412:

Mtg. form	A	B	B1	B2	C _{min}	C _{max}	C1	D1	D2	E	H
234M4	88	140	159	178	115	130	50	15	5	48	80
234N4	88	140	159	178	115	130	45	15	5	48	80
234V4	64	140	159	178	115	130	40	15	5	48	80

Dimensions in mm:

Door interlock with **metal shaft extension**: Four hole front mounting

Setup of order code number		
Type	Switching progr.	Mtg. form
H406	41800	483N4
Order code no. H406-41800-483N4		



¹⁾ Internal depth: inside of door to top of DIN rail, dimensions see page 146.

Switching programmes 3 and 4 pole

Types H216 / H220 / H226 / H233:

Mtg. form	A	B	B1	B2	C1	D1	D2	E	H
483M4	67	36	48	60	38	15	4.5	36	70
483N4	67	36	48	60	33	15	4.5	36	70
483V4	48	36	48	60	32	15	4.5	36	70
484M4	67	36	48	60	38	15	5	48	70
484N4	67	36	48	60	33	15	5	48	70
484V4	64	36	48	60	39	15	5	48	70

Switching programmes 6 and 8 pole

Types H216 / H220 / H226 / H233:

Mtg. form	A	B	B1	B2	C1	D1	D2	E	H
483M4	67	72	84	96	38	15	4.5	36	70
483N4	67	72	84	96	33	15	4.5	36	70
484M4	67	72	84	96	38	15	5	48	70
484N4	67	72	84	96	33	15	5	48	70
484V4	64	72	84	96	39	15	5	48	70

Types B240 / B250 / B263:

Mtg. form	A	B	B1	B2	C1	D1	D2	E	H
483M4	67	50	69	88	38	15	4.5	36	72
483N4	67	50	69	88	33	15	4.5	36	72
483V4	48	50	69	88	32	15	4.5	36	72
484M4	67	50	69	88	38	15	5	48	72
484N4	67	50	69	88	33	15	5	48	72
484V4	64	50	69	88	39	15	5	48	72

Types B240 / B250 / B263:

Mtg. form	A	B	B1	B2	C1	D1	D2	E	H
483M4	67	100	119	138	38	15	4.5	36	72
483N4	67	100	119	138	33	15	4.5	36	72
484M4	67	100	119	138	38	15	5	48	72
484N4	67	100	119	138	33	15	5	48	72
484V4	64	100	119	138	39	15	5	48	72

Types H406 / H408 / H410 / H412:

Mtg. form	A	B	B1	B2	C1	D1	D2	E	H
483M4	88	70	89	108	50	15	5	48	80
483N4	88	70	89	108	45	15	5	48	80
483V4	64	70	89	108	40	15	5	48	80

Types H406 / H408 / H410 / H412:

Mtg. form	A	B	B1	B2	C1	D1	D2	E	H
483M4	88	140	159	178	50	15	5	48	80
483N4	88	140	159	178	45	15	5	48	80
483V4	64	140	159	178	40	15	5	48	80

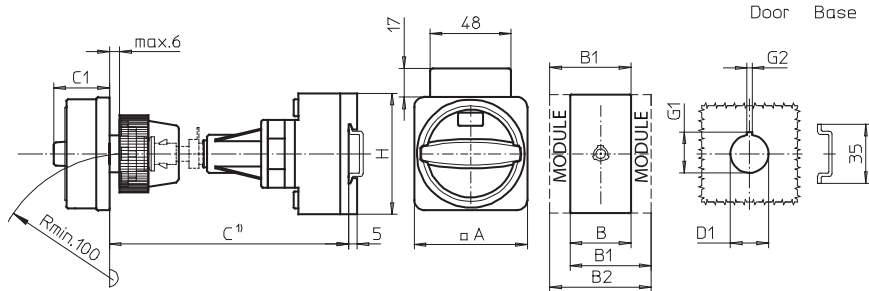
Disconnect Switches

Main/Emergency-Off Switches **Base mounting** Snap-on mounting with door interlock

Dimensions in mm:

Door interlock with **metal shaft extension**: Single hole front mounting

Setup of order code number		
Type	Switching progr.	Mtg. form
H233	41400	281N4
Order code no. H233-41400-281N4		



¹⁾ Internal depth: outside of door to top of DIN rail, dimensions see page 146.

Switching programmes 3 and 4 pole

Types H216 / H220 / H226 / H233:

Mtg. form	A	B	B1	B2	C1	D1	G1	G2	H
281M4	67	36	48	60	38	22.5	24.2	3.2	70
281N4	67	36	48	60	33	22.5	24.2	3.2	70
281V4	48	36	48	60	32	22.5	24.2	3.2	70

Types B240 / B250 / B263:

Mtg. form	A	B	B1	B2	C1	D1	G1	G2	H
281M4	67	50	69	88	38	22.5	24.2	3.2	72
281N4	67	50	69	88	33	22.5	24.2	3.2	72
281V4	48	50	69	88	32	22.5	24.2	3.2	72

Types H406 / H408 / H410 / H412:

Mtg. form	A	B	B1	B2	C1	D1	G1	G2	H
281M4	67	70	89	108	38	22.5	24.2	3.2	80
281N4	67	70	89	108	33	22.5	24.2	3.2	80
281V4	64	70	89	108	39	22.5	24.2	3.2	80

Switching programmes 6 and 8 pole

Types H216 / H220 / H226 / H233:

Mtg. form	A	B	B1	B2	C1	D1	G1	G2	H
281M4	67	72	84	96	38	22.5	24.2	3.2	70
281N4	67	72	84	96	33	22.5	24.2	3.2	70

Types B240 / B250 / B263:

Mtg. form	A	B	B1	B2	C1	D1	G1	G2	H
281M4	67	100	119	138	38	22.5	24.2	3.2	72
281N4	67	100	119	138	33	22.5	24.2	3.2	72

Types H406 / H408 / H410 / H412:

Mtg. form	A	B	B1	B2	C1	D1	G1	G2	H
281M4	67	140	159	178	38	22.5	24.2	3.2	80
281N4	67	140	159	178	33	22.5	24.2	3.2	80
281V4	64	140	159	178	39	22.5	24.2	3.2	80